

see also c 186 pages 274 & 278
C 190-298
B 21-68
227

B-25-1

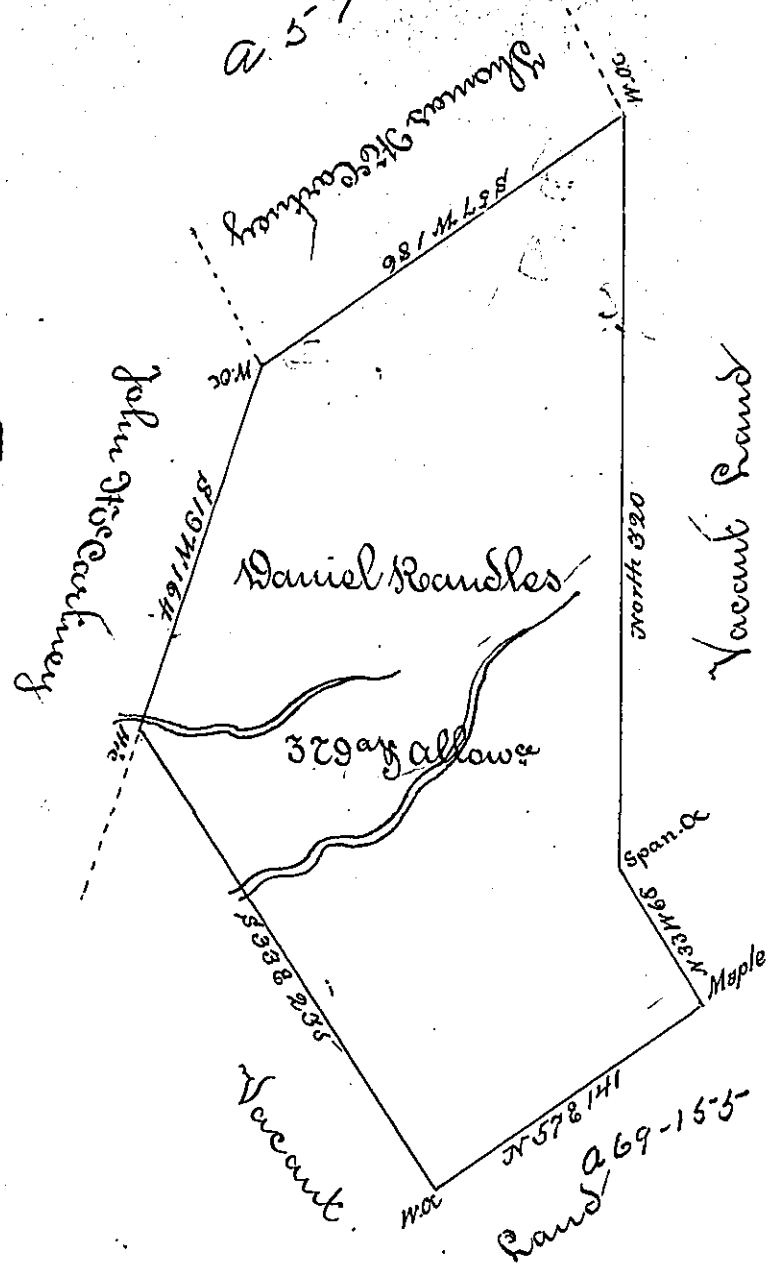
A 57-194

Pat-P-11-41

Vacant land

C 34-76

Hand A 69-155



Survey'd to Daniel Reaudles on the 16th Day of May 1786, the above described tract of three hundred & seventy nine acres on the usual allowance of six & Cent. Situate on the south side of Black Rock creek bounded on the west by land of John McCarty & on the North by land of Thomas McCarty in Westmoreland County. By warrant of the 7th Day of Dec^r 1785
 John Lukens Esqr S. Genl
 Joshua Elder D.S.

IN TESTIMONY that the above is a copy of the original remaining on file in the Department of Internal Affairs of Pennsylvania, made conformably to an Act of Assembly approved the 16th day of February, 1833. I have hereunto set my Hand and caused the Seal of said Department to be affixed at Harrisburg, this first _____ day of _____ 1896.

James W. Patton
 Secretary of Internal Affairs.